



YLI ELECTRONIC

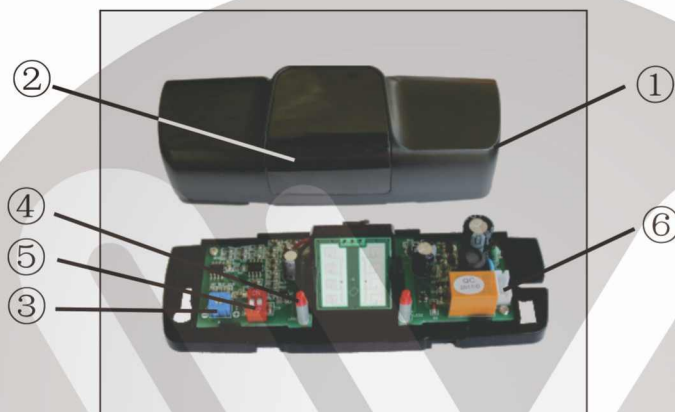


Opening For Automatic Sliding Doors

Model: YAD-210MS

Description

Other use of the device is outside the permitted purpose and can not be guaranteed by the manufacturer. The manufacturer cannot be held responsible for incorrect installations or inappropriate adjustments of the sensor.



- ① Cover
- ② Indicator
- ③ Sensitivity potentiometer
- ④ LED
- ⑤ DIP switch
- ⑥ Connector

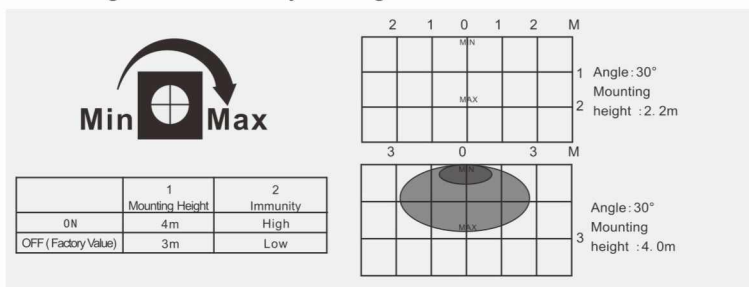
Brown	
Green	Power Supply
White	Relay (COM)
Yellow	Relay (NO)

Technical specifications

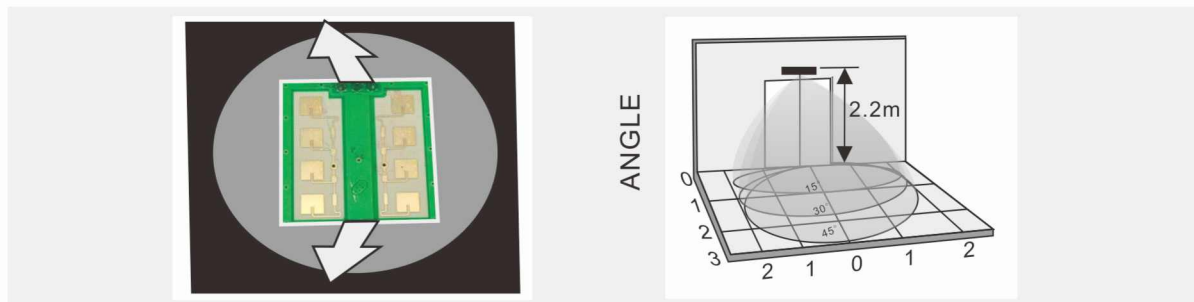
- Technology: Microwave and microprocessor
- Transmitter frequency: 24.125GHz
- Transmitter radiated power: <20dBm EIRP
- Transmitter power density: <5mW/cm²
- Maximum mounting height: 4m
- Tilt angles: 15° -45°
- Max. detection field: 4mx2m (mounting height=2.2m)
- Detection mode: motion
- Minimum speed: 5cm/s (measured in the sensor axis)
- Supply voltage: 12V to 24V AC+/- 10%; 12V to 30V DC
- Mains frequency: 50-60HZ
- Power consumption: <2W(VA)
- Output relay (free of potential change-over contact)
- Max. contact voltage: 42V AC-60V DC
- Max. contact current: 1 A(resistive)
- Max. switching power: 30W(DC)/60VA(AC)
- Output hold time: 0.5s
- Temperature range: -20°C to +55°C
- Degree of protection: IP52
- Housing material: ABS
- Housing colour: Black, Silver gray
- Physical dimension:
140mm (width) * 48mm (height) * 42mm (depth)
- Cable length: 2.5m

Setting

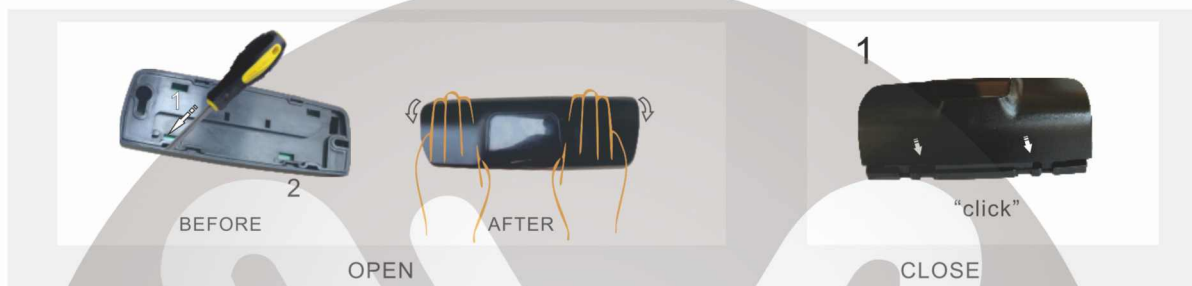
1、Size of sensing field: sensitivity settings.



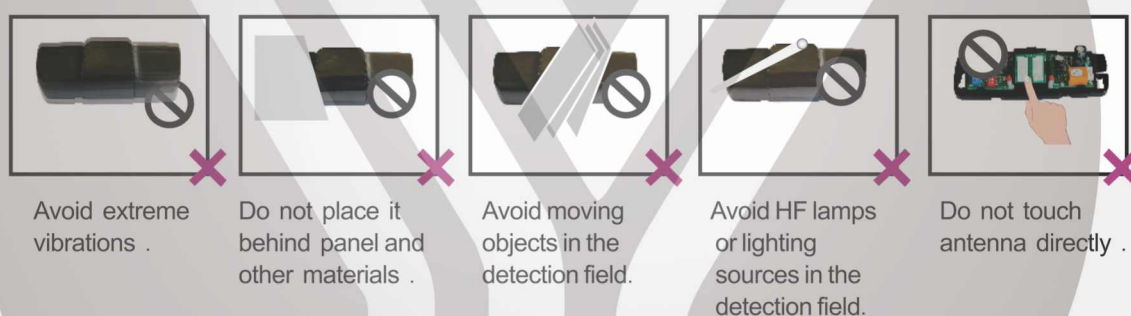
2、Depth of sensing field: vertical angle of the planar antenna .



3、Open and close



4、Installation tips.



Troubleshooting

The door will not open and LED is OFF.	The sensor power is off .	1. Check the wiring and the power supply .
The door will not open and LED is OFF.	The sensor "sees" the door moving. When closing, the door creates vibrations picked up by the sensor .	1. Increase the tilt angle and /or reduce the sensitivity. 2. Make sure that the sensor is correctly fixed .
The door will not close. LED is OFF .	ON-OFF switch at door control is in wrong position or faulty .	1. Make sure that the ON-OFF switch for the door is in the ON or AUTOMATIC position.
Detection area is too small .	Sensitivity is too low . Height mode is error set.	1. Adjust sensitivity potentiometer, increase sensitivity . 2. When mounting height is more than 3 meters , turn the switch 1 to ON .



SAFETY INSTRUCTIONS

The manufacturer of the door system is responsible for carry out a risk assessment and installing the sensor and the door system in compliance with applicable national and international regulations and standards on door safety. Only trained and qualified personnel may install and setup the sensor
The warranty is void If unauthorized repairs are made or attempted by unauthorized personnel.
Avoid touching any electronic and optical components.